

## Community Leadership and Libraries Committee

8 March 2021

<b>Title</b>	<b>Domestic Abuse and Violence Against Women and Girls Strategy Annual Update</b>
<b>Report of</b>	Councillor Reuben Thompstone
<b>Wards</b>	All
<b>Status</b>	Public
<b>Urgent</b>	No
<b>Key</b>	No
<b>Enclosures</b>	None
<b>Officer Contact Details</b>	Peter Clifton, Community Safety Manager Peter.clifton@barnet.gov.uk Tel: 0208 359 3120

### Summary

This report provides the Community Leadership and Libraries Committee with an update on the delivery and implementation of the Barnet Violence Against Women and Girls 2017-2020 Strategy.

The Barnet Violence Against Women and Girls (VAWG) Strategy 2017-2020 sets out how the Barnet Safer Communities Partnership (BSCP) works to prevent and respond Domestic Abuse, and underlines the partnership's commitment to working together to prevent all forms of violence against women and girls (VAWG).

This report reviews delivery and data across the 2019/20 performance year (April 2019-March 2020) although in some places refers to more recent data and trends, including matters relating to service delivery and continuity during the Covid-19 pandemic.

## Officers Recommendations

1. That the Community Leadership and Libraries Committee note and comment on the progress made by the Safer Communities Partnership on delivering the four priority objectives of the Barnet Violence Against Women and Girls Strategy.

### 1. WHY THIS REPORT IS NEEDED

- 1.1 The Barnet Violence Against Women and Girls (VAWG) Strategy sets out how the Barnet Safer Communities Partnership works to prevent and respond Domestic Abuse and underlines the partnership's commitment to working together to prevent all forms of violence against women and girls (VAWG).
- 1.2 The Community and Leadership Committee (CLC) endorsed the *Barnet VAWG strategy 2017-2020* on the 21<sup>st</sup> June 2017.
- 1.3 The delivery of the Barnet VAWG strategy is overseen by the Barnet Safer Communities Partnership Board ('BSCP'). This is in line with the responsibility of the Barnet Safer Communities Partnership ('BSCP' or 'the Partnership') for producing and implementing an overall partnership strategy for reducing crime and anti-social behaviour.
- 1.4 Within the overall Barnet Community Safety Strategy, one of the seven priority objectives is that: *"The Safer Communities Partnership prevents violence against women and girls, improves outcomes for victims and their children and holds perpetrators to account."*
- 1.5 The Violence Against Women and Girls Partnership Delivery Group (a sub group of the Barnet Safer Communities Partnership Board) brings together partner organisations in the borough so that they can work together to respond to VAWG with the aim of preventing it and reducing the harm it causes to victims, their families and the wider community. This group agrees an annual VAWG delivery plan setting out the key partnership activities required, in order to deliver against the four partnership priorities within the Barnet VAWG strategy.
- 1.6 The four partnership priorities within the Barnet VAWG strategy are:
  - Preventing Violence Against Women and Girls
  - Improving outcomes for victims and their children
  - Holding perpetrators to account

- Enhancing joint working practices between agencies

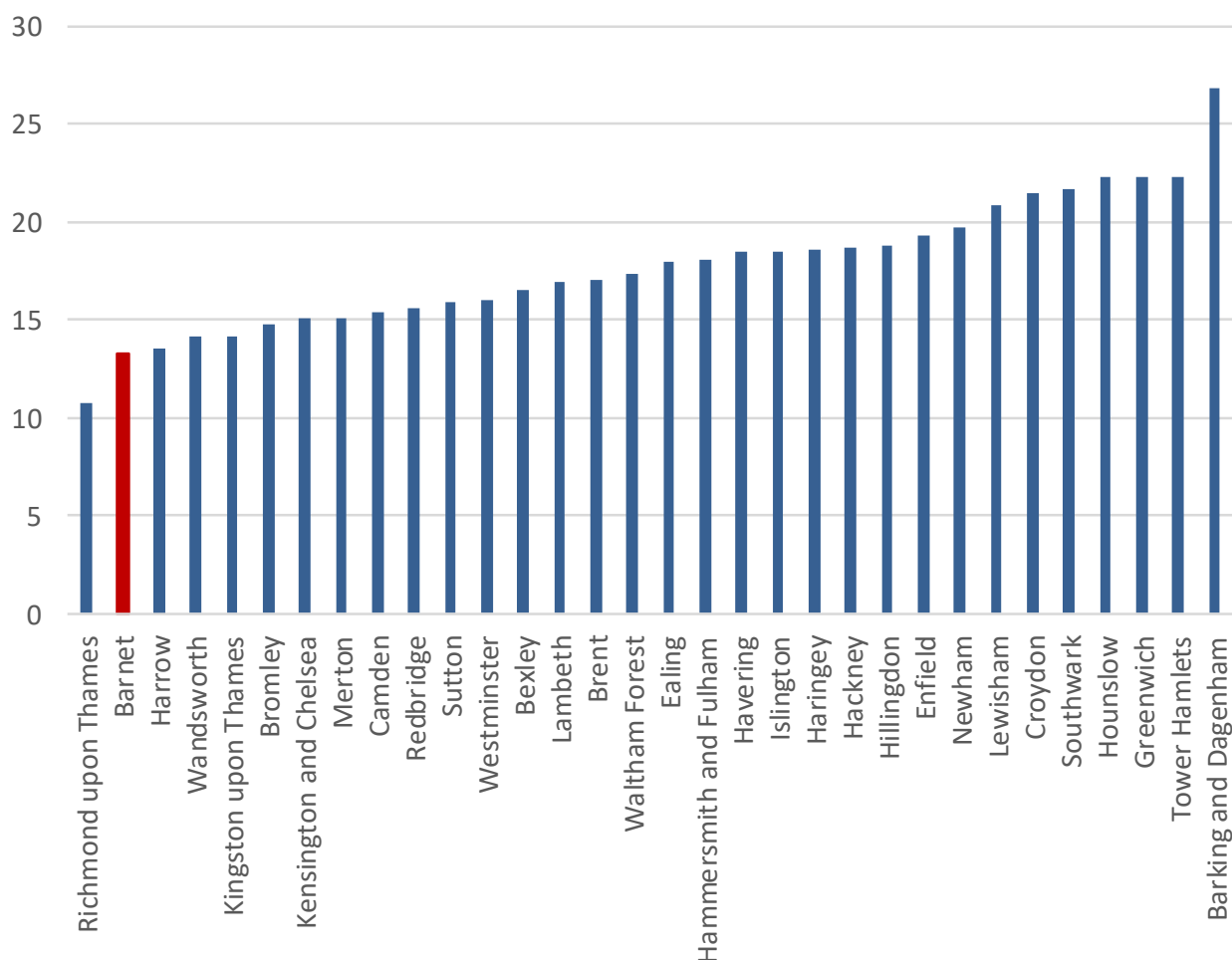
## 1. BACKGROUND CONTEXT

### 1.7 Performance

- The rate of DA incidents in Barnet is 13.3 per 1000 population (12 months to September 2020). This is the 2nd lowest rate of all 32 London boroughs.

1

Domestic Abuse incidents per 1000 population in the  
previous 12 months

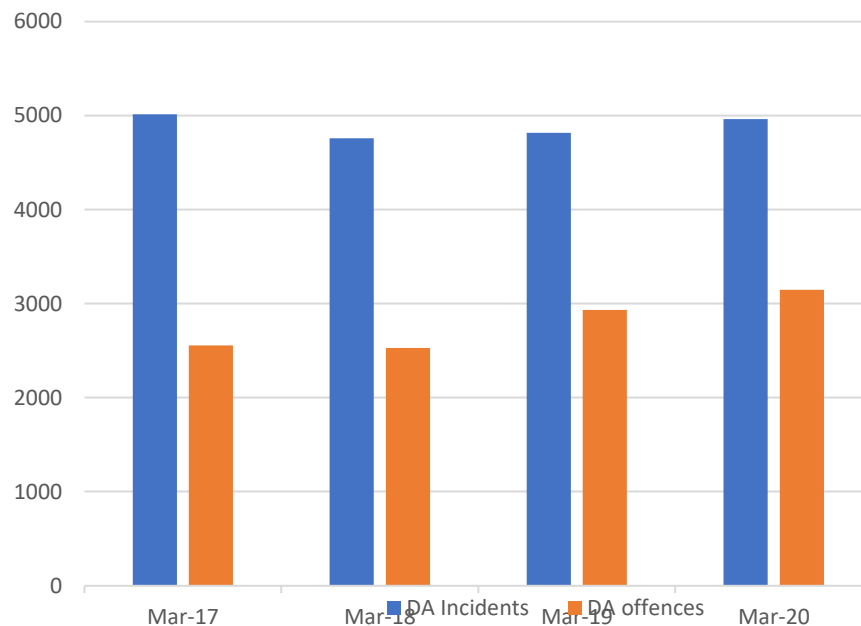


<sup>1</sup> Data to September 2020

- The table below shows the number of DA incidents and offences in Barnet. Over the last three years there has been an upward trend in the proportion of incidents which result in being classified as offences.

Rolling 12 months	March 2017	March 2018	March 2019	March 2020
DA Incidents	5013	4757	4815	4960
DA offences	2556	2528	2933	3146
% of incidents that become offences	51%	53%	61%	63%

Police data recorded for Rolling 12 months DA incidents and DA offences in Barnet



- Barnet's rate of DA incidents in Barnet is **13.3** per 1000 population (12 months to March 2020). This is the 2nd lowest rate of all 32 London boroughs.
- There were 807 Domestic Abuse Violence with Injury offences recorded by the police in Barnet in 2019/20 (an increase of **0.5%** compared to the previous year).
- In the 12 months between April 2019 and March 2020, for Violence with Injury Domestic Abuse offences, **110** suspects were identified and proceeded against by police. This equates to a Sanction Detection Rate of **13.6%**, down from **17%** a year ago.

1.7.1 Over the last 12 months<sup>2</sup> (2019/2020) the Domestic Abuse MARAC has received **363** referrals of high-risk cases of domestic abuse with **238** children in the households. The number of families with children were **154**.

1.7.2 An assessment of the DA MARAC referrals over a 12-month period<sup>3</sup> from April 2019 to March 2020 showed that:

- In Barnet the peak age range for both victims (33%) and perpetrators (27%) for cases heard at DA MARAC between 31-40 years old. At national level, women aged 20 to 24 years were more likely to be victims of any domestic abuse in the last year than women aged 25 years and over.
- 95% of victims referred to Domestic Abuse MARAC are female
- 95% of perpetrators at the Domestic Abuse MARAC are male
- 24% of perpetrators had a mental health issue (up from 16% a year ago), 8% had an alcohol misuse issue, and 16% had a drugs misuse issue (up from 12% from previous year)
- 41% of victims in the cohort had a mental health issue (up from 21% a year ago), 6% had an alcohol misuse issue, and 5% had a drugs misuse issue (up from 2% the previous year)
- There were 42 (11%) cases involved child to parent violence (compared to 7.5% a year ago)
- There were 17 requests (5% of DA MARAC cases) for Clare's Law at the DA MARAC in 2019/20

**[ continued on next page ]**

---

<sup>2</sup> 12 months up to March 2020

<sup>3</sup> 12 months to March 2020

- 1.8 From April 2019 to March 2020, the profile of service users at our DA support services in Barnet are:

<b>Organisation</b>	<b>Female</b>	<b>Age range</b>	<b>Other factors</b>
Solace Advocacy and Support Service	<b>98%</b> female victims <b>2%</b> male victims	<b>31%</b> of service users between 31-40 <b>21 %</b> between 41-50	<b>7%</b> of SUs with mental health disability  <b>3%</b> -SUs with problematic drug use <b>4%</b> -SUs with problematic alcohol use <b>31%</b> -SUs with mental health issues
DA MARAC victims	<b>95%</b> female victims <b>5%</b> male victims	<b>21 %</b> of Service Users between 41-50 <b>33%</b> of service users between 31-40	<b>5%</b> -SUs with problematic drug use <b>6%</b> -SUs with problematic alcohol use <b>41%</b> -SUs with mental health issues  <b>3%</b> -SUs with problematic alcohol and drug use
DA MARAC perpetrators	<b>95%</b> alleged male perpetrators of abuse (APOA) <b>5%</b> alleged female perpetrators of abuse	<b>17%</b> of APOA between 41-50 <b>28%</b> of APOA between 31-40	<b>16%</b> - APOA with drug misuse <b>8%</b> - APOA with alcohol misuse <b>24%</b> - APOA with mental health issues  <b>5%</b> -APOA with problematic alcohol and drug use

## Partnership activity highlights

1.9 Partnership work delivered under the Barnet VAWG Strategy has included:

- Barnet Council's continued funding of specialist services for victims of DA and VAWG; this includes refuge provision, IDVA Services, the Domestic Abuse MARAC and the perpetrator programme
- Between April 2019 and March 2020 Solace Women's Aid received **1169** referrals to Barnet's IDVA service, up from **1144** in the previous year; 100 women and children supported in the Barnet refuge service; and our DA MARAC, delivered by Hestia, received **363** referrals with **238** children within these households
- Barnet council commission RISE Mutual CLC to deliver an adult and young people's perpetrator service to support perpetrators in changing their behaviour. Between April 2019 and March 2020, **61** adult perpetrators received interventions under the Perpetrator Behaviour Change programs
- Barnet's One Stop Shop (OSS) is a drop-in service for early intervention and advice for victims of Domestic Abuse. The OSS which is delivered by Barnet Homes (with partners including Barnet council, Solace Women's Aid, Asian Women's Resource Centre, private solicitor firms, Barnet Magistrate and Cyber Care) has provided advice and support to **443** victims of Domestic Abuse in the 12 months to March 2020.

## Delivering the VAWG Strategy in 2019/2020

2.1 The following section provides an update on the partnership activities delivered under the 2018/19 VAWG delivery plan, taking each of the four Barnet VAWG Strategy priorities in turn:

- Preventing Violence Against Women and Girls
- Improving outcomes for victims and their children
- Holding perpetrators to account
- Enhancing joint working practices between agencies

2.1.1 Work is currently underway to refresh the Barnet Domestic Abuse and VAWG Strategy. The necessary focus on Domestic Abuse business continuity during the lockdown periods (see section 2.24: *COVID-19 and Business Continuity refresh COVID-19 and Business Continuity for details*) has pushed back the achievable timescales for completion and launch of the refreshed strategy. The refreshed strategy will be brought before the Community Leadership and Libraries Committee in June 2021 for a September 2021 launch.

## Priority: Preventing Violence Against Women and Girls

- 2.2 This priority aims to prevent violence against women and girls by focusing on changing attitudes and behaviour that foster violence against women and girls, and by intervening earlier.
- 2.3 What's available in the Borough of Barnet? For a detailed list of the range of Domestic Abuse services available in Barnet please see *Appendix 1*.
- 2.3.1 Some of the key partnership activities that have been delivered or have taken place during 2019/20 to make this happen have been:
- VAWG Training
  - Awareness raising campaigns
  - A Healthy relationships education programme
  - Women's refuge provision
  - Independent Domestic Violence Advocacy (IDVA) service provision
  - Domestic Abuse Multi-Agency Risk Assessment Conference (MARAC)
  - Barnet Sanctuary Scheme

### VAWG Training

- 2.4 A *Partnership VAWG Skills and Training Needs* analysis was conducted and an annual VAWG Partnership Training Plan was developed for 2018/20. The training plan sought to foster an approach across the partnership whereby every encounter with a service user experiencing or perpetrating domestic abuse would be made to count, and be seen as an opportunity for an intervention.

Table 1: Training participation (12 months to March 2020)

Training Course	Attendance numbers
MARAC	51
Online domestic abuse & sexual awareness	68
<b>Total</b>	<b>119</b>

The Online domestic abuse & sexual awareness take up has increased since April 2020.

- 2.5 The 119 attendees came from different service areas and partner agencies, including Family Services, Adult Social care and Barnet Homes as well as other statutory and non-statutory partnership agencies.



- 2.6 Barnet homes have made the Online Domestic Abuse and sexual awareness training compulsory for front line professionals. As a result, the uptake of this course has increased considerably.

#### Awareness raising campaigns

- 2.7 The partnership VAWG Communications plan has overseen the delivery of a publicity campaign focused on raising awareness about Domestic Abuse, the unacceptability of abusive behaviour, and encouraging people to report domestic abuse.
- 2.8 In addition, the Children Workforce Development team has secured funding (in March 2019) for a one-day awareness campaign in Barnet focused on 'Supporting victims of modern day slavery, human trafficking and prostitution'. The campaign took place on 05 March 2019 at Hendon town Hall where 110 participants from the communities, voluntary and statutory sectors attended. The recommendations will be developed into an action plan lead by Public Health Strategist and Chair of Adult Safeguarding Board.
- 2.9 Sadly, death as a result of domestic abuse is an all too frequent and tragic reality. When this happens, the law says that professionals involved in the case must conduct a multi-agency Domestic Homicide Review (DHR) to identify what changes can be made to reduce the risk of similar incidents happening in the future. The purpose of Domestic Homicide Reviews is not to assign blame or responsibility but to understand what lessons there are to be learned and make recommendations based on those lessons as to how we can better work together to prevent future homicides. During 2020 Barnet Safer Communities Partnership published the learning from a Domestic Homicide Review and organised a Webinar on 26 November 2020 on 'Identifying and Mitigating Risk in Adult Family Abuse Cases: Learning from a Domestic Homicide Review (DHR)' to discuss and raise awareness around the learning from the review (including in relation the factors to consider when assessing risk in families where the complexities of mental illness, substance misuse, and elders with vulnerabilities exist, and, importantly, how best to mitigate those risks to reduce serious harm).

#### Healthy relationships education programme

- 2.10 A Healthy Relationships training programme has been developed for schools in Barnet. The training focuses on educating young people about healthy relationships and about abuse (including online-abuse) and reinforces the importance of respect and consent in relationships.

- 2.11 From April 2019 onwards the Iranian and Kurdish Women's Rights Organisation (IKWRO) Charity has completed extensive work in Archer Academy, providing training for all students on healthy relationships and also their teachers. Along with this they have provided 2-day training on healthy relationships to Hendon School and Pavilion PRU.
- 2.12 This priority aims to improve outcomes for victims and their children by focusing on intervening in the right way, at the right time, with the right services.

### Women's refuge provision

- 2.13 Solace Women's Aid are commissioned by the Barnet Council to provide two women's refuges for Barnet. A third women's refuge (Minerva House) is run by Barnet homes. Barnet Homes has been successful in securing for the fourth time £100,000 of funding from the MHCLG to support the continuation the Minerva House provision in 2019/20.
- 2.14 Minerva House supports women who approach Barnet Homes fleeing domestic abuse. It provides victims with supported refuge accommodation and thereby can sometimes help avoid victims being isolated in temporary accommodation far away from their support networks.

Table 3: Refuge provision in Barnet for 2019/2020

Refuge	Bed space	Support provided in 2018/19
<b>Minerva House</b>	6 bed spaces	Supported <b>16</b> women and <b>13</b> children
<b>Hannah House and Arlene House</b>	18 bed spaces	Supported <b>39</b> women and <b>32</b> children fleeing domestic abuse

## IDVA service provision

2.15 During 2019/20 the Solace Women's Aid IDVA service in Barnet supported 1346 new service users, up from 1169 in 2018/19- a 15% increase.

Table 4: DV referrals to Barnet Solace Advocacy and Support Service

Number of Solace Referrals	Q1	Q2	Q3	Q4	Financial Year 2019-2020
New Service Users	330	355	347	331	<b>1346</b>
DASH Risk assessments & Safety advice given	160	177	158	209	<b>704</b>
High risk cases receiving IDVA service	37	47	40	42	<b>166</b>
Total Service Users Leaving the Service	79	115	100	116	<b>395</b>

2.16 The top five sources of referrals into the Advocacy service during this period (by volume) were:

- the One Stop Shop (21%)
- the Domestic Abuse MARAC (19%)
- Self-referrals, Family and Friends (18%),
- the Police (14%),
- and Family Services (9%)

## Barnet Solace Advocacy and Support Service :Referral sources 12 months to March 2020



- 2.17 A review of the IDVA services was conducted in March 2019. The aim of the review was to ensure our IDVA services are accessible and delivered at the right place and right time to meet local demand as well as identifying areas where increased IDVA support was required for victims. As a result of the findings of this review a number of steps were taken, including to increase the links between IDVA services and Mental Health Services – see section 2.20 for further details.
- 2.18 In addition to the locally commissioned IDVA service, MOPAC commission Victim Support to provide an uplift in IDVAs across London. This provision is called the *Integrated Victims and Witnesses Service*. MOPAC have recently completed a review and re-organisation of the allocation of the Victim Support IDVAs to align the provision with the Police BCUs (Basic Command Units).

- 2.19 As a result of this review exercise the following IDVAs have been colocated with various services in the borough to improve on referral pathways:
- Victim Support provides 1 IDVA (MOPAC funded) based at the **Barnet hospital**
  - One Solace IDVA based at **Springwell, Mental Health department, Barnet Hospital**
  - One Solace IDVA supports **Children and Adult MASH**. The IDVA to access both MASH data systems to speed up referral pathways (4 days per week plus one day at Solace Office)
  - One Solace IDVA at **Domestic Abuse One Stop Shop** (one day per week-afternoon to work at Barnet Homes) to work jointly with the One Stop Shop Coordinator for complex cases
  - One Solace IDVA co-located at **Colindale Police station 3 days a week**
  - Victim Support IDVA covers **2 days at Colindale Police Station**
  - One Solace Case worker is the **young person's lead**
  - One IDVA-3 days a week at **Jewish Women's Aid**
  - One Solace Case worker covers **duty and admin work** to relieve IDVAs of the duty work so that they can carry more specialised work
  - 3 volunteers recruited to support the Solace office in admin work
  - **Solace Senior IDVA** – to deliver the role of **LGBT/Male victim lead in addition to MARAC lead and supervision**

#### Domestic Abuse MARAC

- 2.20 Over the last 12 months (2019/20) the Domestic Abuse MARAC has received 363 referrals of high-risk cases of domestic abuse. There were 238 children within those households. The percentage of repeat MARAC referrals is 13.2% as compared to the national figure of 31% of repeat cases seen at the MARACs. The main sources of referrals to the Domestic Abuse MARAC are the Met Police, Barnet Solace Advocacy and support Service (SASS) and Victim Support.

Number of Service Users (12 months to March 2020)	Q1	Q2	Q3	Q4	Financial Year 2019-2020
Number of MARAC Referrals	107	90	96	70	363
Number of Children in the Household	80	61	52	45	238
No. of families with children	50	44	31	29	154
Number of repeat MARAC Referrals	16	14	8	10	48
% of Repeat MARAC Referrals	33.3%	29.2%	16.7%	20.8%	13.2%

### Barnet Homes Sanctuary Scheme

2.21 The Barnet Homes Sanctuary Scheme helps victims of domestic abuse, who live in Barnet, to remain in their own home, if it is safe to do so, by increasing the security at their home. In the last year, **65** homes received crime prevention security measures under the Barnet Homes Sanctuary scheme.

### COVID-19 and Business Continuity

2.22 DA MARAC – We have implemented a fourfold increase in the frequency of the Domestic Abuse MARAC meetings – a change from monthly to weekly MARAC meetings. As a result, there is now a faster turnaround between referral of complex DA cases and multi-agency risk review and actions at the MARAC. The MARAC assessed risk and put in place risk reduction plans for complex/high risk DV cases – at the moment approximately 4 – 10 cases are being referred into the DV MARAC each week.

2.23 All the DV services commissioned by the local authority (including the IDVA service, Refuges service, Perpetrator and Perpetrator Programme) have made adjustments to their operating models so that they can continue to operate effectively under the coronavirus restrictions – all are accepting referrals and delivering their interventions and support services. Details of how to access these services as well as other DA related services delivered by the VCFS can be found

here: <https://www.barnet.gov.uk/community/community-safety/help-and-support-domestic-or-sexual-abuse>

2.24 As part of the Recovery process the Barnet DA and VAWG Delivery Board and weekly Practitioners leads meeting will continue monitor and adjust the delivery model as required in response to and anticipation of the changing circumstances.

2.25 We have also launched a public communications campaign including a new Domestic Abuse poster, updated Website (information for residents and practitioners):

- The new Domestic Abuse poster asks: "Are you worried about domestic or sexual abuse?" and emphasises that "If you are at home due to Coronavirus, then remember you can still get the support that you need. You are NOT alone." The campaign also provides contact details on how to report Domestic Abuse and get support. Please see poster attached which can be shared and freely.
- We have been in contact with a number of supermarket chains in the borough and a number of them have agreed to display the poster inside / outside their stores
- Updated Domestic Abuse web-page:  
<https://www.barnet.gov.uk/community/community-safety/help-and-support-domestic-or-sexual-abuse>
- Domestic Abuse – guidance for practitioners  
<https://www.barnet.gov.uk/working-children-barnet/practitioner-guidance/violence-against-women-and-girls>

**[ continued on next page ]**

## **Priority: Holding perpetrators to account**

- 2.26 This priority aims to hold perpetrators to account through enforcement, and placing the onus on perpetrators to change their behaviour.
- 2.27 Some of the key partnership activities that have been delivered or have taken place during 2019/20 to make this happen have been:
- Perpetrator programme for Behaviour change
  - Young Person Perpetrators programme
  - Investigation and Enforcement action
  - Tackling online offending

### Perpetrator programme for Behaviour change

- 2.28 Barnet Council commissions Rise Mutual to deliver a domestic abuse perpetrator programme in Barnet aimed at reducing re-offending and repeat victimisation. The programme uses proven evidence-based models for behaviour change. They help perpetrators to take positive and tangible steps to prevent re-offending.
- 2.29 In 2019/20 RISE Mutual received a total of 148 referrals. Of these 100 were for the adult male perpetrator interventions, 13 were for female perpetrator programme and 34 were for the child to parent violence intervention.
- 2.30 Due to the Covid 19 lock down period at the start of March 2020 there was a slight decrease in the referral volume, and this trend continued into April and May. Referrals increased in the months that followed as the frequency of incidents are reported to rise and greater risk to victims have been identified.
- 2.31 Most referrals were received from children's services and early help teams. However, they are promoting referrals via MARAC and other professional services.
- 2.32 RISE Mutual is a support service and therefore relies on service users consenting to engage and attend appointments and sessions.
- 2.33 However, given it is a voluntary attendance service, engagement rates are very positive. Out of the 148-people referred, 99 attended for an initial suitability assessment.
- 2.34 RISE completion rate is also very strong at with 61 service users starting an intervention and 36 completing. There were 23 service users still engaging with an intervention at the end of 2019/20 Q4.



2.35 Despite the challenges presented by Covid-19, RISE perpetrator programme attrition rate in 2019/20 has remained low, and the programme continually looks for ways to reduce the attrition rate.

2.36 Of the 148 cases received, Safe Relationships was the highest intake at 53 cases and made up 35% of the case load. Child Parent Violence was the second highest at 34 and made up 23% of the case load

2.37 Social impact

- The feedback from pre/post questionnaires carried out by RISE to look at the apparent the impact that different programmes are having on service users. 89% of respondents to the pre-intervention survey indicated that they '[have] used strategies to prevent [my] thoughts escalating to emotional abuse or violent behaviour'. This had risen to 100% of respondents in the post intervention survey.
- Also, 88% of respondents to the pre-intervention survey indicated that they: 'acknowledge that [their] behaviour has an impact on [their] children'. This had risen to 100% of respondents in the post intervention survey.

#### Young Person Perpetrators programme

2.38 There has been an increase in the number of referrals to the Domestic Abuse MARAC which relate to cases of child to parent violence. During 2019/20 – 42 cases or 11% of the Domestic Abuse MARAC cases related to abuse perpetrated by a son or daughter towards their parent as compared to 7.5% of the DA MARAC cases in 2018/19 related to abuse by a son or daughter towards their parent

2.39 Rise Mutual delivers a Young Person Perpetrator programme in Barnet. This programme provides one-to-one and group interventions for young people who have been involved in abusive relationships of child to parent violence.

2.40 The Child to Parent Violence one -to-one programme is for 11 to 18-year olds. The Respect and Principles (RAP) Programme is for 13 to 18-year-old males who have been involved in adolescent intimate relationship abuse.

#### Investigation and Enforcement

2.41 There were **807** Domestic Abuse Violence with Injury offences recorded by the police in Barnet in 2019/20 (an increase of 0.5% compared to the previous year).

- 2.42 In the 12 months between April 2019 and March 2020 in Barnet for Violence with Injury Domestic Abuse offences, **110** suspects were identified and proceeded against by police. This equates to a Sanction Detection Rate of **13.6 %** (down from **17%** a year ago).
- 2.43 The Domestic Abuse Sanction Detection rate has fallen across London, not only in Barnet. Police have a number of actions in place aimed at increasing the Domestic Abuse Sanction Detection rate. These include a plan for the improved use of Body Worn Cameras to secure evidence.
- 2.44 The Body worn cameras being used by Barnet Police to gather evidence at a domestic abuse incident, record the behaviour of the offender, the response of adult and child victims, and the scene itself. This evidence can then support witnesses by providing evidence-led prosecutions to help ensure perpetrators are brought to justice.

**[ continued on next page ]**

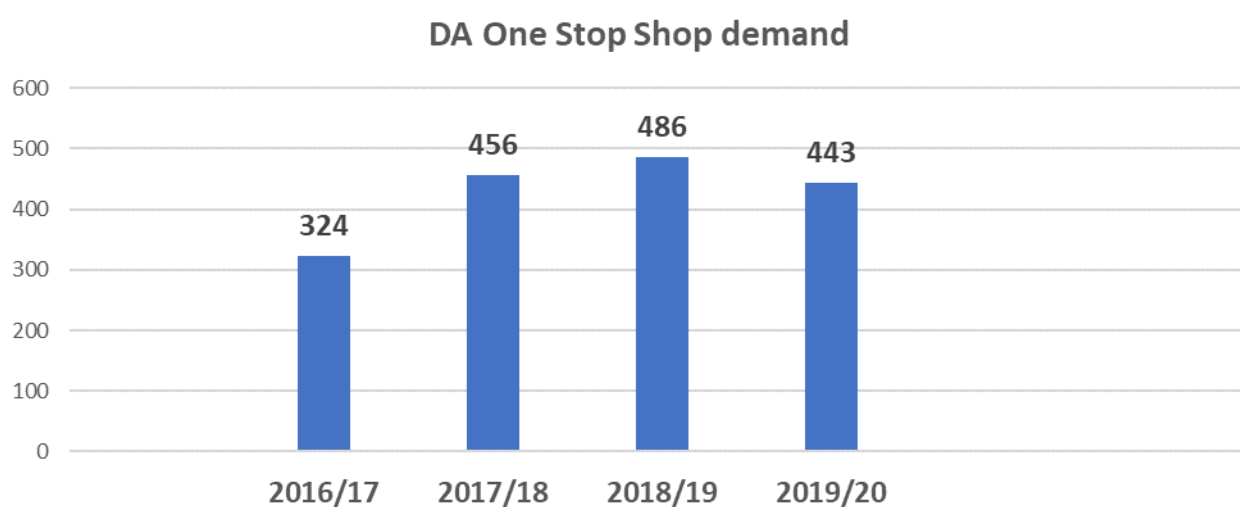
## Priority: Enhancing joint working practices between agencies

- 2.45 This priority aims to prevent violence against women and girls by developing joint working practices to provide a consistent, co-ordinated response to victims and their children
- 2.46 Some of the key partnership activities that have been delivered or have taken place during 2019/20 to make this happen have been:
- The Barnet Domestic Abuse One Stop Shop
  - Delivery of the Barnet IRIS project
  - Safeguarding Children in Barnet through Operation Encompass
  - Domestic Homicide Reviews (DHRs)
  - Governance arrangements for the delivery of the VAWG Strategy

### The Barnet Domestic Abuse One Stop Shop

- 2.47 Barnet's One Stop Shop (OSS) is a drop-in service for early intervention and advice for victims of DA and VAWG. The OSS which is delivered by Barnet Homes (with partners including Barnet council, Solace Women's Aid, private solicitor firms, Barnet Magistrate, Asian Women Resource Centre and Cyber Care) has provided advice and support to **443** victims of Domestic Abuse in the 12 months to March 2020. The demand has been constant from **486** in 2018/19, **456** in 2017/18 and **324** in 2016/17.

Table 5: One Stop Shop demand



- 2.48 In addition to bringing together a breadth of partnership expertise to support victims of Domestic Abuse the OSS receives referrals from a wide range of agencies across the partnership as well as self-referrals.

#### Delivery of the IRIS<sup>4</sup> project- Overview of Q4 2019-2020

- 2.49 The project started in February 2018; 26 GP Surgeries have received training under this programme.
- 2.50 Feedback about the impact of the IRIS project, from the GP practices has been positive and this has been reflected in a marked increase in the rate of Domestic Abuse referrals from those surgeries. Of the GP surgeries to have received training the number of Domestic Abuse referrals has increased from **4** per year prior to the IRIS training to **110** referrals from 1st April 2019 –26 June 2020.

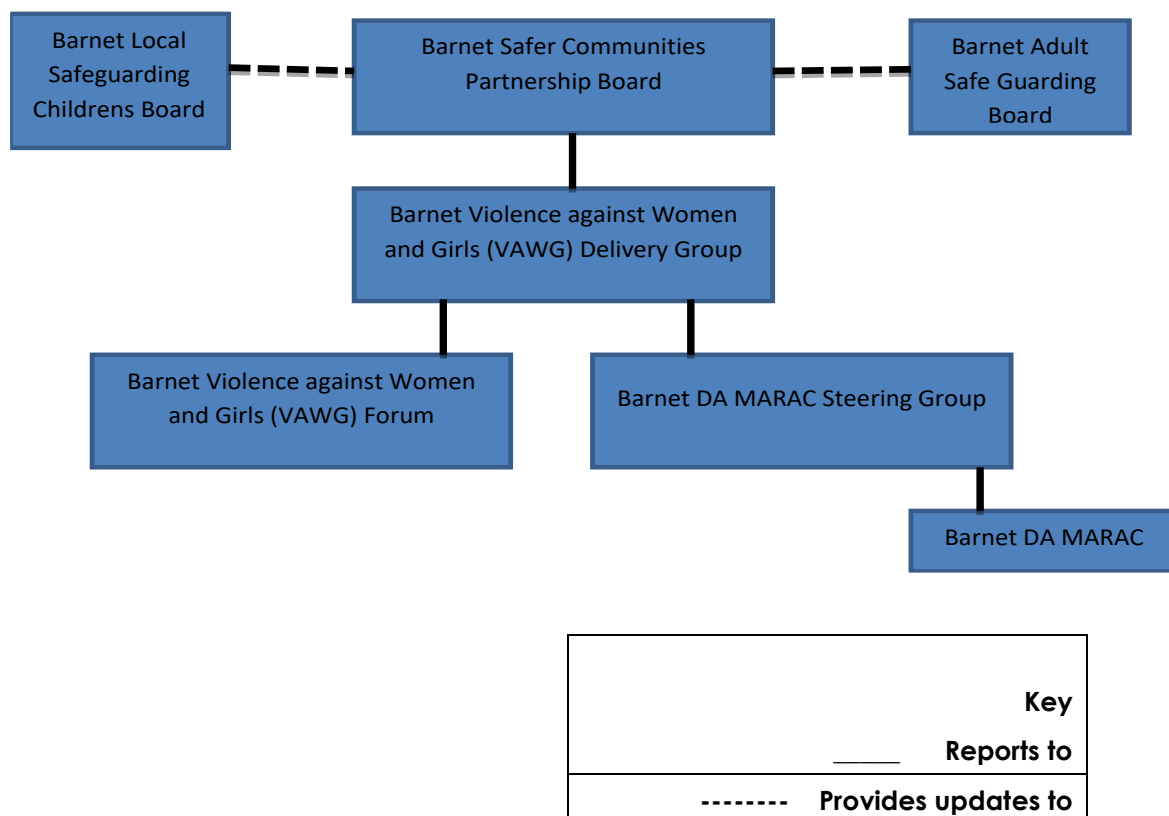
#### Governance arrangements for the delivery of the VAWG Strategy

- 2.51 The delivery of the Barnet VAWG strategy is managed by Barnet's VAWG Delivery Group (a subgroup of Barnet's Safer Communities Partnership Board). The VAWG Delivery Group meets on a quarterly.
- 2.52 Alongside the VAWG delivery group there is a VAWG Forum which is comprised of agencies from the statutory and voluntary sector that work or have an interest in supporting the delivery of the VAWG strategy in Barnet. The forum seeks to monitor performance of multi-agency delivery of the VAWG action plan, share good practice, identify gaps, recognise emerging needs and issues.
- 2.53 Updates on progress of delivering on the VAWG strategy are provided quarterly to the VAWG Delivery Group and annually to the Safer Communities Partnership Board.

---

<sup>4</sup> IRIS stands for: 'Identification and Referral to Improve Safety'. Its aim is to improve awareness among GP practices around domestic abuse and thereby to increase the early identification (and appropriate referral) of victims of domestic abuse by primary care practitioners.

Diagram 1: Barnet VAWG governance chart



### 3. REASONS FOR RECOMMENDATIONS

- 3.1 To update the Community Leadership and Library Committee (CLLC) regarding the progress made in relation to the delivery of the Barnet Domestic Abuse and Violence Against Women and Girls Strategy.

### 4. ALTERNATIVE OPTIONS CONSIDERED AND NOT RECOMMENDED

- 4.1 Not relevant in relation to this report.

### 5. POST DECISION IMPLEMENTATION

- 5.1 Not relevant in relation to this report.

### 6. IMPLICATIONS OF DECISION

#### Corporate Priorities and Performance

- 6.1 This report supports the council's corporate priorities as expressed through the Corporate Plan for 2019-24 which sets out our vision and strategy for the next 5 years. This includes the outcomes we want to achieve for the borough, the priorities we will focus limited resources on, and our approach for how we will deliver this.
- 6.2 Our 3 outcomes for the borough focus on place, people, and communities:
- a pleasant, well maintained borough that we protect and invest in
  - our residents live happy, healthy, independent lives with the most vulnerable protected
  - safe and strong communities where people get along well
- 6.3 Six key priorities have been set to support the delivery of the third outcome.
- Keeping Barnet safe
  - Tackling anti-social behaviour and environmental crime
  - Celebrating our diverse and strong communities and taking a zero-tolerance approach to hate crime
  - Ensuring we are a family friendly borough
  - Focusing on the strengths of the community and what they can do to help themselves and each other
  - Supporting local businesses to thrive
- 6.4 The effective implementation of the Violence Against Women and Girls Strategy supports Barnet in achieving the outcomes and priorities set out in the corporate plan by helping to keep residents of Barnet safe and protecting the most vulnerable.

#### **Resources (Finance & Value for Money, Procurement, Staffing, IT, Property, Sustainability)**

- 6.5 The council has an annual budget of £696,400 to commission the following services:
- 6.6 All these services have been procured in line with the Councils procurement procedures, and a contract performance monitoring regime is in place to ensure the services deliver and demonstrate value for money. The cost for the delivery of the above services will remain within the existing budget allocations.
- The Advocacy services
  - Refuge Services
  - Perpetrator programme Services
  - DA MARAC

- 6.7 Where suitable opportunities exist we work local partners, including health, police, education, housing, and the wider third sector to secure additional external sources of funding to fund initiatives to support the delivery of the VAWG strategy in response to our local needs assessment and the best available evidence of what works. Given the above, there are no significant resource implications arising from the recommendations of this report.

## **Social Value**

- 6.8 None applicable to this report, however the council must take into account the requirements of the Public Services (Social Value) Act 2012 to try to maximise the social and local economic value it derives from its procurement spend.

## **Legal and Constitutional References**

- 6.9 S6 of Crime and Disorder Act 1998 ('the 1998 Act') places a statutory duty on responsible authorities as set out in s5 (including local authorities, the Police, Probation Trusts, and Fire and Rescue Authorities) to formulate and implement strategies for the reduction of crime and disorder (including anti-social behaviour), for combating the misuse of drugs, alcohol and other substances; and for the reduction of reoffending.
- 6.10 The BSCP is a Community Safety Partnership set up in accordance with the requirement of the section 5 Crime and Disorder Act 1998 as amended by section 108 of the Policing and Crime Act 2009.
- 6.11 Under s.17 of the Crime and Disorder Act 1998, it is also a duty of the Council (and other partner agencies, including Police, Fire & Rescue, GLA, TfL) when exercising its functions to have due regard to the likely effect of the exercise of those functions on, and the need to do all that it reasonably can to prevent crime and disorder (including antisocial behaviour), misuse of drugs, alcohol and other substances and re-offending
- 6.11.1 The terms of reference of this committee includes community safety and to receive reports on relevant performance information and risk on the services under the remit of the Committee

## **Risk Management**

- 6.12 Risk management varies according to the different initiatives. The partnership or appropriate agencies are made aware of risks and actions to mitigate the risk are agreed and put in place. There is always risk that the partnership may not achieve the targets set due to factors outside its direct control – however there is

strong partnership working in place enabling agencies to identify and highlight risk and be open to addressing the risk collectively.

## **Equalities and Diversity**

- 6.13 Equality and diversity issues are a mandatory consideration in the decision making of the council.
- 6.14 Decision makers should have due regard to the public sector equality duty in making their decisions. The Equality Act 2010 and the Public-Sector Equality Duty require elected Members to satisfy themselves that equality considerations are integrated into day-to-day business and that all proposals emerging from the business planning process have taken into consideration the impact, if any, on any protected group and what mitigating factors can be put in place. The equalities duties are continuing duties they are not duties to secure a particular outcome. The statutory grounds of the public sector equality duty are found at section 149 of the Equality Act 2010 and are as follows:
- 6.15 A public authority must, in the exercise of its functions, have due regard to the need to:
- eliminate discrimination, harassment, victimisation and any other conduct that is prohibited by or under this Act;
  - advance equality of opportunity between persons who share a relevant protected characteristic and persons who do not share it;
  - Foster good relations between persons who share a relevant protected characteristic and persons who do not share it.
- 6.16 Having due regard to the need to advance equality of opportunity between persons who share a relevant protected characteristic and persons who do not share it involves having due regard, in particular, to the need to:
- remove or minimise disadvantages suffered by persons who share a relevant protected characteristic that are connected to that characteristic;
  - take steps to meet the needs of persons who share a relevant protected characteristic that are different from the needs of persons who do not share it;
  - Encourage persons who share a relevant protected characteristic to participate in public life or in any other activity in which participation by such persons is disproportionately low.



- 6.17 The steps involved in meeting the needs of disabled persons that are different from the needs of persons who are not disabled include, in particular, steps to take account of disabled persons' disabilities.
- 6.18 Having due regard to the need to foster good relations between persons who share a relevant protected characteristic and persons who do not share it involves having due regard, in particular, to the need to:
- Tackle prejudice, and
  - Promote understanding.
- 6.19 Compliance with the duties in this section may involve treating some persons more favourably than others; but that is not to be taken as permitting conduct that would otherwise be prohibited by or under this Act. The relevant protected characteristics are:
- Age
  - Disability
  - Gender reassignment
  - Pregnancy and maternity
  - Race,
  - Religion or belief
  - Sex
  - Sexual orientation
  - Marriage and Civil partnership
- 6.20 This is set out in the council's Equalities Policy together with our strategic Equalities Objective - as set out in the Corporate Plan - that citizens will be treated equally with understanding and respect; have equal opportunities and receive quality services provided to best value principles.

## **Corporate Parenting**

- 6.21 Not applicable to this report.

## **Consultation and Engagement**

- 6.22 As a matter of public law, the duty to consult with regards to proposals to vary, reduce or withdraw services will arise in four circumstances:
- where there is a statutory requirement in the relevant legislative framework
  - where the practice has been to consult, or, where a policy document states the council will consult, then the council must comply with its own practice or policy

- exceptionally, where the matter is so important that there is a legitimate expectation of consultation
- Where consultation is required to complete an equalities impact assessment.

6.23 Regardless of whether the council has a duty to consult, if it chooses to consult, such consultation must be carried out fairly. In general, a consultation can only be considered as proper consultation if:

- comments are genuinely invited at the formative stage
- the consultation documents include sufficient reasons for the proposal to allow those being consulted to be properly informed and to give an informed response
- there is adequate time given to the consultees to consider the proposals
- there is a mechanism for feeding back the comments and those comments are considered by the decision-maker / decision-making body when making a final decision
- the degree of specificity with which, in fairness, the public authority should conduct its consultation exercise may be influenced by the identity of those whom it is consulting
- where relevant and appropriate, the consultation is clear on the reasons why and extent to which alternatives and discarded options have been discarded. The more intrusive the decision, the more likely it is to attract a higher level of procedural fairness.

6.24 The refresh of the Domestic Abuse and VAWG strategy will be informed by consultation - including with partnership organisations through the Domestic Abuse and VAWG delivery Board (subgroup of the Safer Communities Partnership Board), the Domestic Abuse and VAWG Forum (a quarterly forum which provides feedback from partner agencies, service providers, the VCF sector in relation to development and implementation of the Domestic Abuse VAWG strategy). In addition, an extensive consultation exercise has been undertaken with service users.

## **Insight**

6.25 None in the context of this report

## **7. BACKGROUND PAPERS**

Community Leadership and Libraries Committee 20th Nov 2019

Agenda Item 9 "London's Blueprint for a Whole System Approach for Women in Contact with the Criminal Justice System 2019-22"

<https://barnet.moderngov.co.uk/documents/s56435/CLLC%20Cover%20Paper%20Blueprint%20for%20Women%2020%20Nov%202019.pdf>

Community Leadership and Libraries Committee 11th June 2019

Agenda Item 9 "Preventing and Responding to Violence against Women and Girls & Domestic Abuse (VAWG & DA) - Annual Report (2018/2019)"

<https://barnet.moderngov.co.uk/documents/s52884/6826769%20->

Community Leadership Committee 21st June 2017

Agenda Item "London Borough of Barnet Violence against Women and Girls(VAWG) Strategy 2017-2020"

<https://barnet.moderngov.co.uk/documents/s40298/London%20Borough%20of%20Barnet%20Violence%20against%20Women%20and%20GirlsVAWG%20Strategy%202017-2020.pdf>

---

## REPORT CLEARANCE CHECKLIST

**(Removed prior to publication and retained by Governance Service)**

*Note: All reports must be cleared by the appropriate Committee Chairman, Chief Officer, Legal, Finance and Governance as a minimum. Report authors should also engage with subject matter experts from other service areas where this is required (e.g. procurement, equalities, risk, etc.). The name and date that the chairman or officer has cleared the report must be included in the table below or the report will not be accepted.*

**Legal, Finance and Governance require a minimum of 5 working days to provide report clearance. Clearance cannot be guaranteed for reports submitted outside of this time and your report is likely to be withdrawn from the agenda and deferred to the next scheduled meeting.**

**AUTHOR TO COMPLETE TABLE BELOW:**

Who	Clearance Date	Name
Committee Chairman		Councillor Reuben Thompstone
Chief Officer		Clair Green
HB Public Law	24/02/2021	Sharon Clarke
Governance	24/02/2021	Tracy Scollin